



SBSxxUU Shaft Support Rails with Steel Shafts

Precision steel shaft with ready-mounted aluminium shaft support rails, flanged, extremely high height tolerance. For use with open Linear Bushings. For long guides or high loads where self-supporting shafts cannot be used due to shaft warping.



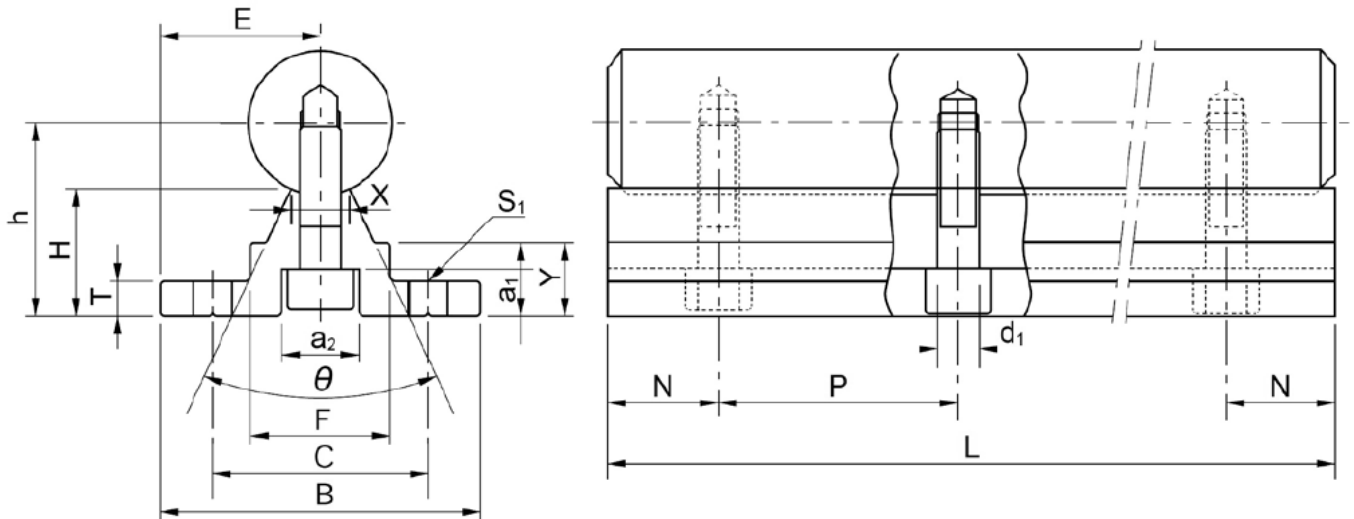
SKU: [MCH1366](#)

Brief Data:

- Product Name: Open Linear Bushing Support Rail.
- Type: Open Linear Shaft.
- Shaft Diameter: Ø12mm.
- Length: 500mm.
- Material: Aluminum/Steel.
- Hardness: 60.
- Tolerance: H6.

Mechanical Dimension:

Unit: mm



Bezeichnung / Type	Wellendurch- messer / Shaft Diameter	Maße / Dimensions (mm)														Gewicht / Weight (g/m)
		E	h	B	H	T	F	X	Y	C	θ	S ₁	a ₁	a ₂	d ₁	
SBS12	Ø12	15,8	18,5	31,6	13	4	12,5	6	8	22	65°	Ø4,5	5	8	4,5	1450
SBS16	Ø16	20	25	40	17,8	5	18,5	8	11,7	30	80°	Ø5,5	6	9,5	5,5	2560
SBS20	Ø20	22,5	27	45	17,7	5	19	8	10	30	50°	Ø5,5	6,5	11	6,6	3500
SBS25	Ø25	27,5	33	55	21	6	21,5	8	12	35	50°	Ø6,6	6,5	11	6,6	5300
SBS30	Ø30	30	37	60	22,8	7	26,5	10,3	13	40	50°	Ø6,6	8,5	14	9	7380
SBS35	Ø35	32,5	43	65	26,5	8	28	13	15,5	45	50°	Ø9,0	8,5	14	9	9680
SBS40	Ø40	37,5	48	75	29,4	9	38	16	17	55	50°	Ø9,0	8,5	14	9	12690
SBS50	Ø50	47,5	62	95	38,8	11	45	20	21	70	50°	Ø11	12,5	19	11	20460

L Länge / Length (mm)	Bezeichnung / Type				
	SBS12 (mm)	SBS16 (mm)	SBS20 (mm)	SBS25 (mm)	SBS30 (mm)
100	P=50 , N=25				
Art. Nr.	34917	*	*	*	*
150	P=100 , N=25				
Art. Nr.	30001	*	*	*	*
200	P=100 , N=50	P=150 , N=25	P=150 , N=25		
Art. Nr.	30018	12014	12137	*	*
250	P=100 , N=25	P=150 , N=50			
Art. Nr.	30025	12564	*	*	*
300	P=100 , N=50	P=150 , N=75	P=150 , N=75		
Art. Nr.	30032	12021	12144	*	*
350	P=100 , N=25	P=150 , N=25			
Art. Nr.	30049	12570	*	*	*
400	P=100 , N=50	P=150 , N=50	P=150 , N=50		P=200 , N=100
Art. Nr.	30056	12038	12151	*	12762
450	P=100 , N=25	P=150 , N=75			
Art. Nr.	30063	12625	*	*	*
500	P=100 , N=50	P=150 , N=25	P=150 , N=25	P=200 , N=50	P=200 , N=50
Art. Nr.	30070	12045	12168	12281	12694
600	P=100 , N=50	P=150 , N=75	P=150 , N=75	P=200 , N=100	P=200 , N=100
Art. Nr.	30087	12052	12175	12656	12700
700	P=100 , N=50	P=150 , N=50			
Art. Nr.	30094	12557	*	*	*
800	P=100 , N=50	P=150 , N=25	P=150 , N=25	P=200 , N=100	P=200 , N=100
Art. Nr.	30100	12069	12182	12298	12717
1000	P=100 , N=50	P=150 , N=50	P=150 , N=50	P=200 , N=100	P=200 , N=100
Art. Nr.	30117	12076	12199	12304	12380

Note:

- N: Distance first hole to the edge.
- P: Holes Spacing.

Application Examples:





Handsontec.com

We have the parts for your ideas

HandsOn Technology provides a multimedia and interactive platform for everyone interested in electronics. From beginner to diehard, from student to lecturer. Information, education, inspiration and entertainment. Analog and digital, practical and theoretical; software and hardware.



open source
hardware

HandsOn Technology support Open Source Hardware (OSHW) Development Platform.

Learn : Design : Share

www.handsontec.com



The Face behind our product quality...

In a world of constant change and continuous technological development, a new or replacement product is never far away – and they all need to be tested.

Many vendors simply import and sell without checks and this cannot be the ultimate interests of anyone, particularly the customer. Every part sell on Handsotec is fully tested. So when buying from Handsotec products range, you can be confident you're getting outstanding quality and value.

We keep adding the new parts so that you can get rolling on your next project.



www.handsontec.com

[Breakout Boards & Modules](#)



[Connectors](#)



www.handsontec.com

[Electro-Mechanical Parts](#)



www.handsontec.com

[Engineering Material](#)



www.handsontec.com

[Mechanical Hardware](#)



[Electronics Components](#)

P



www.handsontec.com

[Power Supply](#)



[Arduino Board & Shield](#)

Tools & Accessory



www.handsontec.com

[Tools & Accessory](#)